



# THE PRESTON 26

361.72m<sup>2</sup> | 38.94sq

4 2 2

Ceiling Height 2550mm

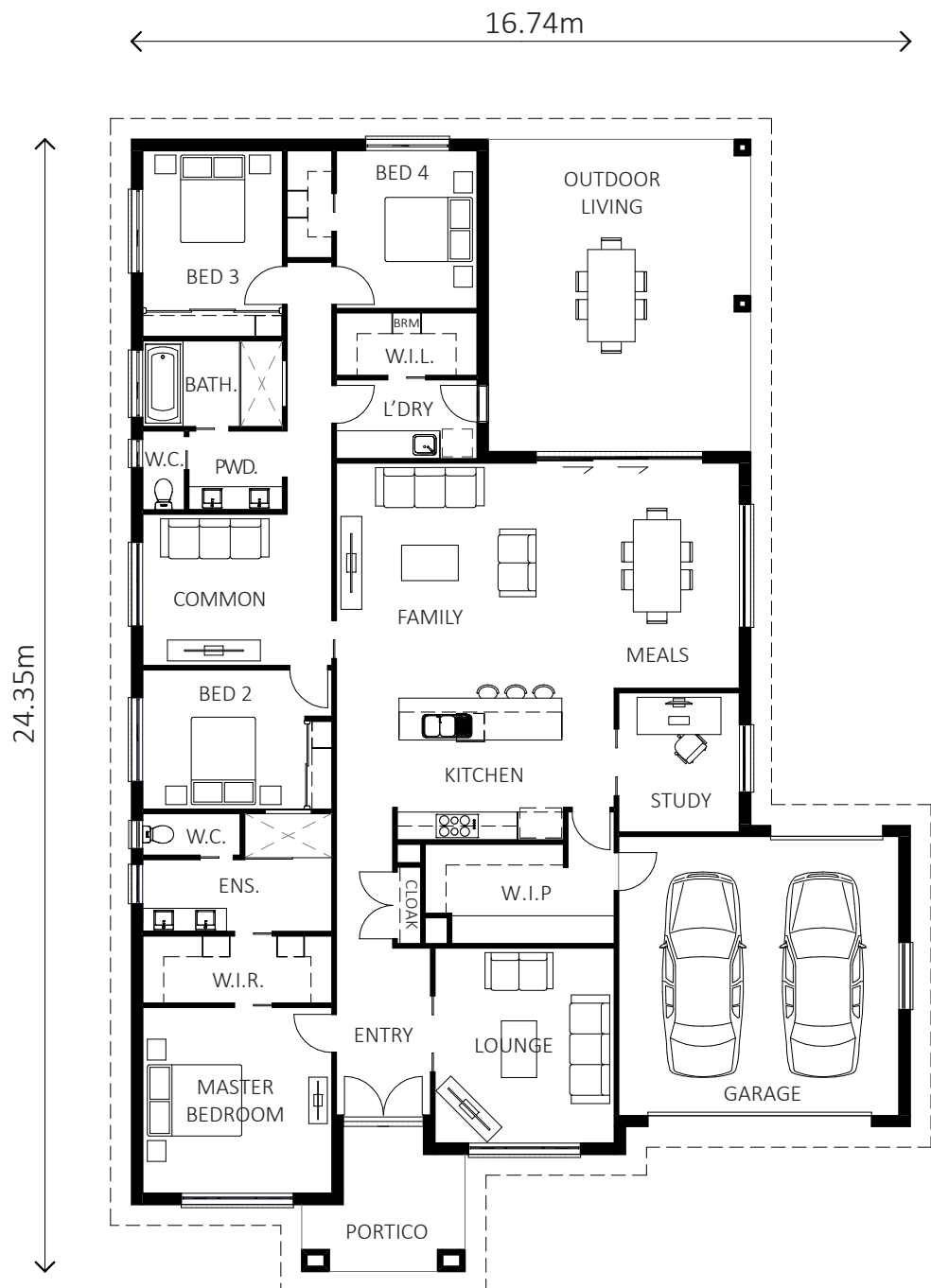
Residence	237.23m <sup>2</sup>	25.54sq
Garage	39.88m <sup>2</sup>	4.29sq
Outdoor	37.90m <sup>2</sup>	4.08sq
Portico	8.92m <sup>2</sup>	0.96sq
Eaves	37.79m <sup>2</sup>	4.07sq
Total	361.72m <sup>2</sup>	38.94sq

Master Bed	4070x4000
Bed 2	3490x3000
Bed 3	3010x3400
Bed 4	3030x3400
Family/Meals	8670x5060
Common	4070x3260
Lounge	3860x4200
Study	2600x3000
Outdoor	5640x6720
Garage	6030x6010

**Lewis Homes**  
Steel Frame Home Builders

Shepparton:  
Office: (03) 5823 2179  
Joe Bovalino: 0447 288 368

VIC Licence CDB – U66238  
NSW Licence 124796C



[www.lewishomes.com.au](http://www.lewishomes.com.au)